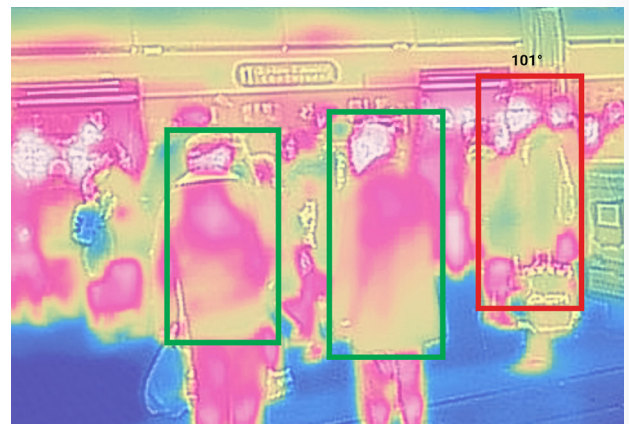




Accurate, Real-Time Measurement of Body Temperature

Thermal Temperature Screening Solution

Our new thermal temperature screening solutions are capable of highly accurate body temperature measurements (ranges of +/- 0.1C (0.18F) to +/- 0.5C (0.9F) based on options). They can measure multiple people simultaneously, allowing for fast, efficient and safe assessment of body temperature without personal contact. Options are also available for Artificial Intelligence (AI) facial recognition and even programmable local strobe and horn alarms.



Thermal Temperature Screening Solutions

Benefits

- Safe, accurate, fast and efficient means to scan body temperature of multiple visitors or employees simultaneously without requirement for personal contact
- Potentially avoid spread of illness from feverish individuals which can result in sick time, productivity loss, or worse
- Visual or audible alerts when abnormal temperatures are detected
- AI facial recognition to flag individuals measured outside of normal ranges or returning individual previously flagged

This is NOT a medical device and is not intended to diagnose or confirm any medical condition.

Great for airports, hospitals, public transportation, schools, commercial buildings, manufacturing, warehouse, and retail applications.