



# BRADY



# ICON BOILER



# TRANE<sup>®</sup>

In collaboration with the industry's top partners,  
we provide you with the best equipment and systems available.



# BRADY

# EXCLUSIVE PARTNERS



## HVAC Applications

Ductless and Ducted Mini-split  
and Variable Refrigerant Flow (VRF)



## Trane DOAS Solutions

Trane ® Mixed Air Unit  
HVAC Equipment Sheet Metal Products  
Roof Curbs  
Curb Adapters



## Air Rotation Systems

Simple Setup and Install  
No Ductwork  
Low Cost of Ownership



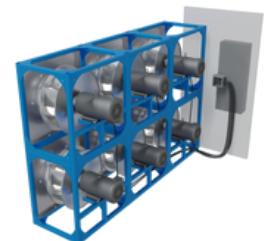
## Custom Air Handling Units

Thermo Composite Walls  
Custom Dx and Chilled Water  
Energy Recovery Options  
Corrosion Resistant  
Low Leakage  
Low Panel Deflection



## Retrofit Fan Arrays and Integrated Controls

EC Motor and Impeller Sizes for Every  
Application





# BRADY

# EXCLUSIVE PARTNERS



## Industrial Heat Pumps and Water Chillers

ChillHeat products are well suited for heating and cooling applications, either as dedicated cooling/ heating solutions or as a combined solution.



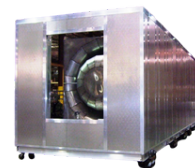
## Custom HVAC Solutions

Air Turnover Units  
Air Handlers/ Make Up Air Units  
Convergence: Packaged VRF Multi-Zone  
Energy Recovery Units



## Custom DX (up to 500 tons)

Multizone Replacements  
Custom Configurations  
Direct Replacements  
Low Dew Point Applications



## Pool Units

Energy Efficiency  
Dehumidification Units  
Health and Comfort





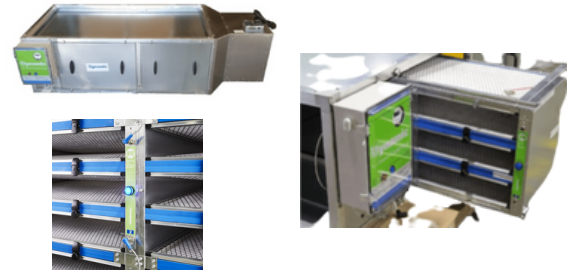
## Modular Chillers and Magnetic Bearing Chillers

High-efficiency Modular Chillers  
Precise Laboratory Applications  
Fits Most Existing Freight Passages  
Redundancy in Refrigeration Circuits



## Air Filtration

Improves Indoor Air Quality  
Reduces Maintenance  
Reduces Operating Costs



## Custom Air Handling Units

No Thru Metal  
Field Assembled Knock Down Units  
Baked Electrostatic Anti-Microbial Finish



## Energy Recovery

Better Indoor Air Quality  
No Moving Parts  
Reduce Energy Consumption  
Odor Mitigation



## UV Lighting Solutions

Advanced UV Germicidal Air Disinfection Products

Increases Air Quality While Decreasing Energy Usage and Maintenance Costs





## Sound Control

Noise and Vibration Control  
For Commercial Applications



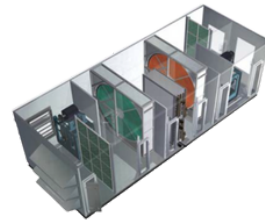
## Custom Curb Solutions

Custom Sheet Metal Products  
Including Roof Curb Solutions



## Heat Recovery Wheels

Energy Recovery System  
Pre-Treatment of OA  
Lower Energy Costs



## Ice Storage System

Back Up Capacity  
Operating Costs  
Noise Reduction



## Web-Based Automation and Integration

Open integration products and special  
applications to deliver the power of the internet  
combined with web services



**TRANE®**

# Products and Systems Solutions

## Building Automation



**Tracer® SC+**  
Scalable building automation system solution with standard, open protocols



**Pivot® Smart Thermostat**  
Wi-Fi & Ethernet thermostat for light commercial applications



**Symbio®**  
Application Specific and Programmable Unit Controllers, Integrates with BACnet MSTP, BACnet/IP, BACnet/Zigbee, Lontalk & Modbus Protocols



**Air-Fi® Zone Sensors**  
Flexible and reliable wireless sensors & system communications leveraging Air-Fi® Wireless (BACnet/Zigbee) technology. Sensors include temperature, humidity, CO2 & occupancy

## Building Management Systems



**Tracer® Ensemble®**  
Enterprise level building management software for facility professionals



**Tracer® Synchrony®**  
Tracer SC+'s built-in web based user interface software for building operators



**Tracer® Concierge®**  
Light commercial control system with set-up wizard for installers and simple user interface for non-technical users



**BAS Operator and Occupant Apps**  
Providing mobile access to service providers, building operators, and occupants

## IAQ Solutions



**Synexis**  
Provides a continuous application of DHP that can reduce airborne and surface pathogens, fungi and VOCs



**TCACS**  
Trane Catalytic Air Cleaning System (TCACS) is an enhanced air filter containing 3 technologies: filtration, germ-killing ultraviolet light, and a photocatalytic oxidation (PCO) process

## Trane® / Mitsubishi Electric VRF & Ductless



**N-Generation CITY MULTI®**  
Energy efficient air and water cooled, all electric VRF systems available in Standard, High Efficiency, and H2i® (Hyper-Heat); 6 - 36 Tons



**HVRF**  
All electric, hydronic VRF system that uses refrigerant and water; Hybrid Branch Controller provides simultaneous heating and cooling; 6 - 36 Tons



**Nv Series**  
Ductless system for maximum energy efficiency and quality control with precise zone control to distribute heating or cooling only to spaces in use; 0.5 - 5 Tons



**P Series**  
Light commercial ductless system for superior comfort, flexibility and reliability with precise 1:1 outdoor to indoor connections for efficient zone management; 1 - 3.5 Tons



**Indoor Units**  
A variety of indoor units available to meet any application and design requirements, including ceiling cassettes, wall mounted, concealed and more



**LEV Kit**  
The power to connect Trane® / Mitsubishi Electric CITY MULTI® Products to Trane Air Handlers; Allows for higher airflows, higher static pressure, larger capacity, customized products, and DOAS configurations

## Trane Precision Cooling



**Single Circuit**  
Single circuit DX or CW; vertical floor mounted; 2 - 10 Ton; tandem compressor options; EC fan technology



**Dual Circuit DX**  
Dual circuit DX or CW; vertical floor mounted; 5 - 80 Tons; EC fan technology



**Ceiling Mounted**  
Ceiling Mounted DX or CW; 1 - 10 Tons; Independently circuited scroll compressors

## Water-Cooled Portfolio Centrifugal Chillers



**Model TACW**  
Oil-free; Cooling operation; 60 - 1400 Tons; R-134a and R-513A



**Agility® Model HDWA**  
175 - 425 Tons; Heating and Cooling capable; Up to 140°F HW; 60 Hz, 50 Hz; Symbio® 800 controller; uses either R-513A or R-134A



**CenTraVac® Model CVHE**  
3-Stage Compressor; Heating and Cooling capable; Free Cooling; Symbio® 800 controller; 150 - 500 Tons; R-514A



**CenTraVac® Model CVHF**  
2-Stage Compressor; Heating and Cooling capable; Free Cooling; Heat recovery operation; Symbio® 800 controller; 325 - 2000 Tons; R-514A



**CenTraVac® Model CVHH**  
Multi-stage; Dual Compressor; Heating and Cooling capable; Free Cooling; Heat recovery operation, Symbio® 800 controller; 900 - 2000 Tons; R-1233zd



**CenTraVac® Model CDHF**  
Multi-Stage Dual Compressor; Heating and Cooling capable; Free Cooling; Symbio® 800 controller; 1450 - 3950 Tons; R-514A



**CenTraVac® Model CDHH**  
Multi-stage; Dual Compressor; Heating and Cooling capable; Free Cooling; Symbio® 800 controller; 1800 - 4000 Tons; R-1233zd

## Water-Cooled Chillers



**Cold Generator™ Model CGWR**  
Scroll Compressors; 20 - 75 Tons; R-410A



**Series R® Model RTWD**  
Helical Rotary Compressor; Heating and Cooling capable; Heat recovery operation—dual setpoint; Up to 140°F HW production; 60 - 250 Tons; R-134a or R-513a



**Optimus® Model RTHD**  
Optional Variable Speed Helical Rotary Compressor; Heating and Cooling capable; 150 - 430 Tons; R-134a; or R-513a for fixed speed only

## Air-Cooled Chillers



**Ascend® Air-to-Water Heat Pump Model ACX**  
Energy efficient, all electric heating and cooling; Symbio® 800 controller; 140-230 tons cooling; 1500 - 2500 MBh heating; R-454B



**Ascend® Model ACS**  
Scroll Compressor; 140 - 230 Tons; R-454B; Heating and cooling capable; Heat recovery; Symbio® 800 controller



**Ascend® Model ACR**  
Variable Speed Helical Rotary Compressor; Free Cooling; Symbio® 800 controller; 150 - 550 Tons; R-513A



**Model CGAM**  
Scroll Compressor; 20 - 130 Tons; R-454B; Heat recovery option



**Model TACA**  
Oil Free Centrifugal; 60 - 440 Tons; R-134a or R-513A



**Sintesis® Model RTAF**  
Variable Speed Helical Rotary Compressor; 115 - 500 Tons; R-513A; Symbio® 800 controller



**Cold Generator™ Model CCAR**  
Scroll Compressor with Air-Cooled Condenser; 20 - 70 Tons; R-410A

## Modular Units



**Thermafit™ Model AMC**  
Air-Cooled Chiller; Free cooling & Heat recovery; 15 - 80 Tons (800 Ton Banks); R-410A



**Thermafit™ Model AMT**  
High efficiency Air-Cooled Chiller; Variable speed compressor and fans; Free cooling & heat recovery; 20 - 40 Tons (400 Ton Banks); High efficiency; R-410A



**Thermafit™ Model MWC**  
Water-Cooled Chiller; Heat recovery; 15 - 80 Tons (800 Ton Banks); R-410A



**Thermafit™ Model MWT**  
High efficiency water-cooled chiller; Variable speed compressor; 20 - 40 Tons (400 Ton Banks); R-410A



**Thermafit™ Model AXM**  
Air-to-water heat pump; Energy efficient; All electric cooling or heating; 30 Ton (300 Ton Banks); R-410A



**Thermafit™ Model WXM**  
Water-to-water heat pump; Energy efficient; All electric cooling or heating; 20 - 80 Tons (800 Ton Banks); R-410A



**Thermafit™ Model MWS**  
Water-cooled multipipe; Simultaneous heating and cooling; 30 - 60 Tons (90-480 Ton Banks); 450 MBh to 7,200 MBh; R-410A



**Thermafit™ Model TACW**  
Water-cooled chiller; Oil-free centrifugal; 60 - 135 Tons (1000 Ton Banks); R-134a and R-513A



**Cold Generator™ Model CICD**  
Water-cooled; Heat Recovery; 20 - 85 Ton (600 ton Arrays)

## Thermal Storage



### Thermal Energy Storage Tanks

Optimizes energy usage by storing renewable, excess or inexpensive energy; Reduces peak electric demand charges; Access to demand response programs; Buildings with chilled water systems above 100 cooling tons



### Thermal Battery™ Air-Cooled Chiller Plant

Pre-Engineered, Factory Built Cooling System. Incl: Air-Cooled Chillers, CALMAC® Energy Storage Tanks, Customizable System



### Thermal Battery™ Storage-Source Heat Pump System

Delivers Heating and Cooling, Supports Electrification. Incl: Water-to-Water and Air-to-Water Heat Pumps, CALMAC® Energy Storage Tanks, Trane Controls

## Packaged Units



### Impack®

Cooling, Gas/Electric, Heat Pump & Dual-Fuel; Multiple Efficiency Levels; Up to 16 SEER; (1 ph-15 SEER2); 2 - 5 Tons



### Foundation®

Cooling, Gas/Electric; Adapts to Competitors Roof Curbs; 3 - 25 Tons



### Precedent® & Precedent® with eFlex™

Cooling, Gas/Electric, Heat Pump & Hybrid Dual-Fuel; 3-25 Tons, Multiple Efficiency Levels, eFlex Variable Speed Compressor; Up to 26.3 IEER, Symbio 700 and Mobile App; 6 - 25 Tons



### Zoned Rooftop Systems

Pre-designed for small building comfort; Includes Precedent or Voyager rooftop unit, VAV terminal units, Tracer® Concierge™ system control & Air-Fi® wireless controls & sensors; 3 - 50 Tons



### Voyager® 3

Cooling, Gas/Electric; eStage™ Multi-Stage Compressors; Full & part load efficiencies; Symbio 700 and Mobile App; Up to 15.8 IEER; 27.5 - 50 Tons



### IntelliPak® 1

Cooling, Gas/Electric, Hot Water; 20 - 130 Tons (Available with eFlex™ Variable Speed Compressor; 20 - 75 Tons), Symbio 800 Controller with 7" Touchscreen Display, Air-Fi® Capable



### IntelliPak® 2

Cooling, Gas/Electric, Hot Water, Air-Cooled; 90 - 150 Tons, Available with eFlex™ Variable Speed Compressor, Standard Double Wall Foam, Symbio 800 Controller with 7" Touchscreen Display, Air-Fi® Capable



### IntelliPak® 3

Cooling, Gas/Electric; 20 - 75 Tons, Available with eFlex™ Variable Speed Compressor, Standard Double Wall Foam, Symbio 800 Controller with 7" Touchscreen Display, Air-Fi® Capable, Up to 17.8 IEER

## Self-Contained Units



### IntelliPak® Modular Series

Split apart construction, easy transport & installation; Factory-installed digital controls; Up to 13.9 EER, 17.9 IEER; Water Cooled 20 - 35 Tons



### IntelliPak® Signature Series

Up to 14.1 EER, 19.3 IEER; Floor by floor system; Factory-installed digital controls; Water-cooled 20 - 110 Tons



### Modular Self Contained System

Smallest Footprint on the Market; Water-Cooled System; Variable speed compressors and fans; Full and part load efficiencies; Industry-leading Part Load Efficiency - Up to 20.8 IEER; 40 - 80 Tons, cassette construction

## Water-Source Heat Pumps



### Axiom™ Standard Efficiency GEH/GEV Models

Horizontal (0.5 - 15T) or vertical (0.5 - 25T); Quiet operation; Multiple airflow configurations; 0.5 - 25 Tons



### Axiom High Efficiency Single-Stage EXH/EXV

Horizontal or vertical; Electronically Commuted Motor (ECM); Rotary or scroll compressor; 0.75 - 6 Tons



### Axiom High Efficiency Two-Stage DXH/DXV Models

Horizontal or vertical; 2-Stage compressor; Deluxe sound option for quiet operation; Meets LEED EAc4 requirement; 2 - 6 Tons



### Axiom Variable Speed VSH/VSV Models

Horizontal or vertical; eFlex™ Variable Speed compressors and fans; Single and three phase voltage; 2 - 5 Tons



### Axiom High Efficiency Console GEC Model

ASHRAE 62 indoor air quality compliant; Quiet operation; 0.5 - 1.5 Tons



### Axiom Vertical Stack GET Model

Multiple capacities & cabinet sizes; Available in PSC or ECM motors; Flexible air supply options; Integrated controls; 0.75 - 3 Tons



### Axiom Water-to-Water EXW Model

Co-axial heat exchanger; Rackable modular design; 5, 10, 20 Tons



### Axiom Rooftop GWS Model

Boiler/Tower or Geothermal applications; Multiple configuration options; Microprocessor controls; 3 - 10 Tons

## Air Handling Units



### Performance Climate Changer® - Catalog

Cost Effective Performance; Compact Footprint; Factory-Engineered, Mounted & Tested Controls; Indoor/Outdoor; Up to 15000 CFM; 2" R-13 Construction



### Performance Climate Changer® - Semi-custom

Leading Efficiency and Casing Performance: Dimensional Flexibility enabling Easy Installation: Indoor/Outdoor; Up to 60000 CFM; up to +/-10 in w.g.; 2", R-13 or 3", R-19 Construction; Factory Engineered, Mounted & Tested Controls



### Performance Climate Changer - Custom (TCFS/TCPA)

Indoor or Outdoor; Up to 200,000 CFM; Up to +/- 12 inches w.g.; Full dimensional flexibility and thermal performance up to R-25



### Trane Air Rotation Unit

Indoor or Outdoor; Up to 300 tons and 120,000+ CFM; CW or DX; 2" Foam Insulated panels, factory engineered & mounted controls

## Terminal Units



### Blower Coil

Blower Coil Model BCXE; Indoor; Up to 4000 CFM; Horizontal and Vertical Configurations; ECM Motors, Multiple Filter Options, Factory-Engineered & Mounted Controls.



### CoolSense® Terminal Unit

Up to 1300 CFM; Variable speed ECM or constant-fan speed; Tracer® UC400 controller (available with Air-Fi wireless)



### VariTrane® Model VC\*F

Single Duct Variable Air Volume Boxes; 25 - 8000 CFM; Optional Factory Installed Piping Package



### VariTrane® Model VDDF

Dual Duct Variable Air Volume Boxes; 80 - 8000 CFM



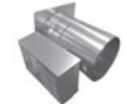
### VariTrane® Model V\*\*F

Fan-Powered Variable Air Volume Boxes; 200 - 3300 CFM; Parallel or Series Configuration



### VariTrane® Model L\*\*F

Low Height Fan-Powered Variable Air Volume Boxes; 100 - 1800 CFM; Parallel or Series Configuration



### VariTrane® Model VRRF

Round Inlet/Round Outlet RetroFit Variable Air Volume Boxes; 25 - 4000 CFM



### UniTrane® Model FC\*B

Horizontal or Vertical Fan Coil; Cabinet, Recessed or Compact Configurations; 200 - 1200 CFM



### UniTrane® Model FCV

Vertical High Rise Fan Coil Units Vertical stack fan coil; 300 - 1200 CFM



### Force-Flo™ Model FF\*B

Horizontal or Vertical Cabinet Heater; Concealed or Recessed Configurations; 200 - 1200 CFM



### Model VUVE

Vertical Unit Ventilators; 750 - 1500 CFM



### Model HUVG

Horizontal Unit Ventilators; 750 - 2000 CFM



### Model UHS/UHP

Propeller Unit Heaters; Hydronic & Steam



### Model UHWA/UHAA/UHRA/UHXA/UHEC/UHCA

Electric Unit Heaters



### Indoor Gas Heating Units

Unit Heaters & Duct Furnaces; High Efficiency >95%

## Split Systems



### Split Systems

Cooling & Heat Pump; Gas, Electric, or Hot Water Heat; 1.5 - 5 Tons



### Odyssey™

Symbio 700 controller ; Full & part load efficiencies; Up to 14.8 IEER; 6 - 25 Tons



### RAUJ

Air-Cooled Condensing Units; Available with Remote Chiller Evaporators; 20 - 120 Tons



### CAUJ

Air-Cooled Condensers; 20 - 120 Tons

## Outdoor Air Solutions



### Horizon™ DOAS

DOAS; Packaged product (DX, Air and Water Cooled); Heat Pump, Gas, and Hot Water; <51F Dew Point capability; ERV; AHRI 920 rated



### HAXX

Up to 100% outdoor air; Packaged product (DX - Gas Heating); >51F Dew Point capability; ERV; AHRI 340/360 certified; ASHRAE 90.1 compliant

## Make-Up Air Gas Heating Units



### Model GSAA

Indoor Gas-Fired Make-Up Air Handlers; Standard & High Efficiency; 100 - 1200 MBH



### Model GRAA

Outdoor Gas-Fired Make-Up Air Handlers; 100 - 1200 MBH



### Model AHOA

Packaged Air Handlers; Cooling, Make-Up Air, & Ventilation

## VFD



Trane TR150/TR200 Variable Frequency Drives; 6, 12, 18 Pulse





# ICON BOILER

We've teamed up with the industry's best partners to give you access to the best equipment and systems in the marketplace



Icon Boiler has a custom-manufactured, private-label product line of firetube boilers, watertube boilers, vertical boilers, condensing boilers, and ancillary boiler room products.



**Multi-Pass Wetback & Dryback Boilers**  
2 Pass, 3 Pass and 4 Pass



**Watertube Boilers**  
Multi-Pass Steam and Hot Water



**Firebox Boilers**  
3 Pass Wetback and Dryback



**Vertical Boilers**  
• Domestic Hot Water  
• Low/High Pressure Steam  
• Space Heating Boiler



**Heat Recovery Boilers**



Camus provides Icon Boiler with the utilization of a new hydronic and cast iron line for projects within the Carolinas.



**Firetube Boilers**



**Watertube Boilers**



**Water Heaters**



**Storage Tanks/Skids**



BFS provides Boiler Room Ancillary Equipment: Surge/Transfer Systems, Condensate Systems, Blowdown Systems, Flash Tanks, Packaged Pump Skids, Control Panels including PLC Based Control Systems



**Dual Tank: Deaerator/Surge**



**Vertical Deaerator**



**Spray Type Deaerator**



**Over/Under Deaerator & Surge**



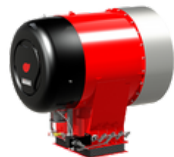
**Tray Type Deaerator**



**Fuel oil pump and heater set rated for 10,000 gph with steam HEX and 200 KW electric heater**



Oilon is an international energy technology company whose burners and heat pumps support sustainable development by directly and measurably reducing emissions



**Oilon ACE-burners**



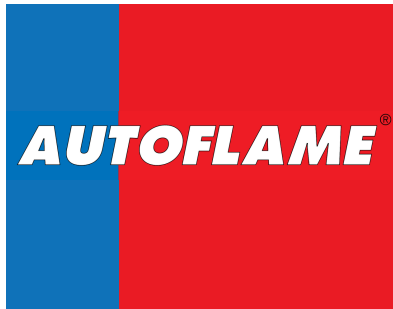
**Burner series 130 - 280**



**Lance burners**



**Burner series 50 - 90**



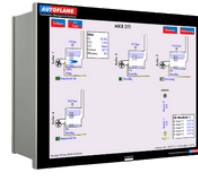
Autoflame is the global market leader in combustion management solutions.



**Burner and Boiler Control**  
Mk8 MM, Mini Mk8 MM



**Emissions Monitoring & Trim**  
Mk8 EGA Evo



**Remote Monitoring & Control**  
Mk8 DTI



WARE is an industrial & commercial boiler rental and service company that specializes in sales, service, valve repair, rentals, parts, turn key and boiler training.



**Mobile Boiler Rooms**



**Trailer Mounted Rental Boilers**



**AUX Equipment**



GPM is a group of experienced pump professionals who represent premier equipment manufactures from Europe. This partnership provides Icon Boiler with access to seven of their pump lines.



E-Tech engineers high quality economizers, condensing economizers, waste heat boilers, and more for customers' waste heat recovery needs.



**Horizontal Box Economizer**



**Circular Economizer**



Madden utilizes state of the art CNC machining equipment to make the component parts to rigid quality, performance and cost standards.



**Blowdown Heat Recovery**



**Chemical Feed Systems**



**Blowdown Separator**



DuraVent is a recognized technological leader for innovations in venting systems. DuraVent has patents for several products and continues to design safe and technologically advanced venting.



**Commercial Grease Duct**



Security Chimneys' expanding product lineup includes a variety of industrial-strength chimneys, all designed for Category I, II, III, and IV heating boilers, domestic water boilers, and low- to high-temperature hydronic heating applications.



**Secure Seal**



Brady offers multiple office and parts store locations across Central and Eastern North Carolina.

### Brady Services Locations

#### **Greensboro**

2025 Sixteenth Street Greensboro, NC 27405

#### **Morrisville**

808 Aviation Parkway Morrisville, NC 27560

#### **Wilmington**

6736 Netherlands Drive Suite A Wilmington, NC 28405

### Trane Supply Locations

#### **Greensboro**

8408 Triad Drive  
3101 S Elm-Eugene St

#### **Raleigh**

4437 Beryl Road

#### **Durham**

4306 Bennett Memorial  
Road

#### **Fayetteville**

626 Winslow Street

#### **Wilmington**

6736 Netherlands Drive

### Contact Us

info@bradyservices.com

(800) 849-1915

